



## KÖMMERLING proStratoTec

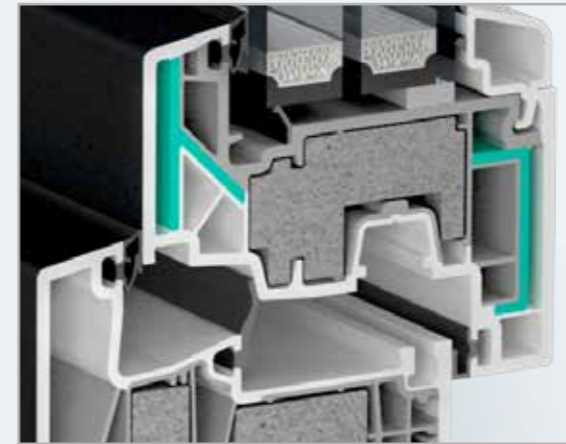
For more **COLOUR** in passive houses.



**KÖMMERLING®**

# KÖMMERLING proStratoTec

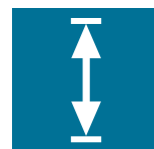
The fibreglass-reinforced plastic which removes the need for steel.



Steel reinforcements have always played an important part in the production of PVC windows. The new proStratoTec technology replaces steel with fibreglass-reinforced plastic, thereby making it redundant. Using an innovative tri-extrusion process, PVC virgin material, regrind and fibreglass-reinforced plastic are extruded at the same time to form a single window profile.

The benefit for you: Thanks to the superior thermal insulation, passive house windows in accordance with the Dr Feist Passive House Institute are now a reality. Sashes equipped with proStratoTec are available in the KÖMMERLING 88 double and centre seal systems.

$U_f$   
**0.79**  
W/(m<sup>2</sup>K)



## ■ Passive house windows now available in colour.

Passive house certification in accordance with the Dr Feist Passive House Institute.

## ■ Weight reduction.

Weighs approx. 25% less compared to sashes with steel.

## ■ Thermal insulation value

$U_f = 0.79 \text{ W/(m}^2\text{K)}$ .

Improved insulating value as no steel is used.

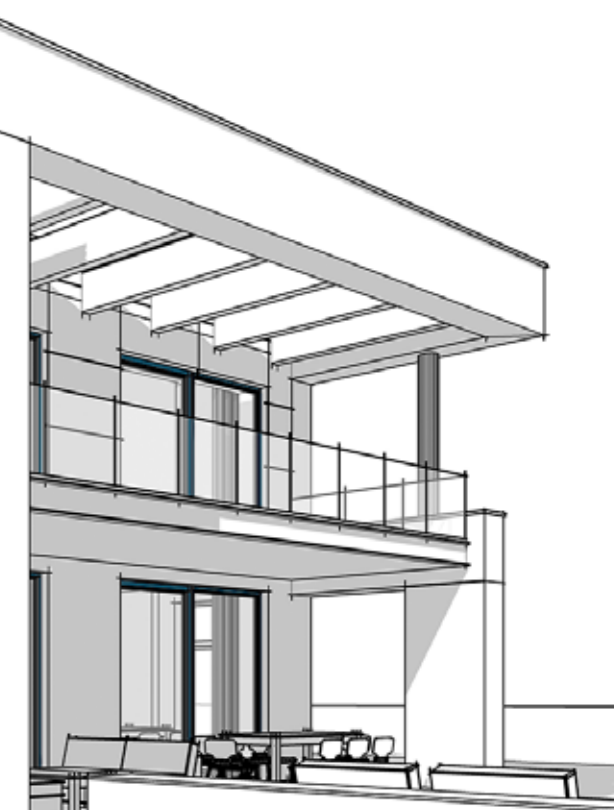
## ■ Standardised manufacture.

No additional steps required.

## ■ Sustainability.

Intelligent recycling process.

All of the materials are reused.



**profine GmbH**  
KÖMMERLING KUNSTSTOFFE

Postfach 2165 · 66929 Pirmasens · Germany  
Tel.: +49 (0) 6331 56 0 · Fax: +49 (0) 6331 56 2475  
E-mail: [info@koemmerling.de](mailto:info@koemmerling.de)  
Internet: [www.koemmerling.de](http://www.koemmerling.de)

