



Kömmerling[®]
TODAY FOR TOMORROW



ROBUST. HIGH-QUALITY.
A GREAT LOOK NOW AND IN FUTURE.

KömaPan[®] – cladding profile

BEAUTIFUL APPEARANCE - LONGLASTING PROPERTIES

KömaPan – tongue and groove profile

No matter whether it is used for facade cladding, door panelling or noise protection and shutter systems: KömaPan offers you a solution for your project that is as affordable as it is high quality.

These established tongue and groove profiles from Kömmerling boast impressive properties: They withstand not only wind and weather, but also chemical environmental effects. Not even pests can harm them. KömaPan owes this protection to its weather- and UV-resistant surface lamination. The completely maintenance-free material retains its shape and the colours stay looking good – and all this with minimal cleaning work. A decision that will pay off for a long time.

Robust

- › Moisture-resistant
- › Weatherproof and weather-resistant
- › UV-resistant
- › Corrosion-resistant
- › Dimensionally stable
- › Lightfast and colourfast in accordance with DIN ISO 105-A03

High-quality

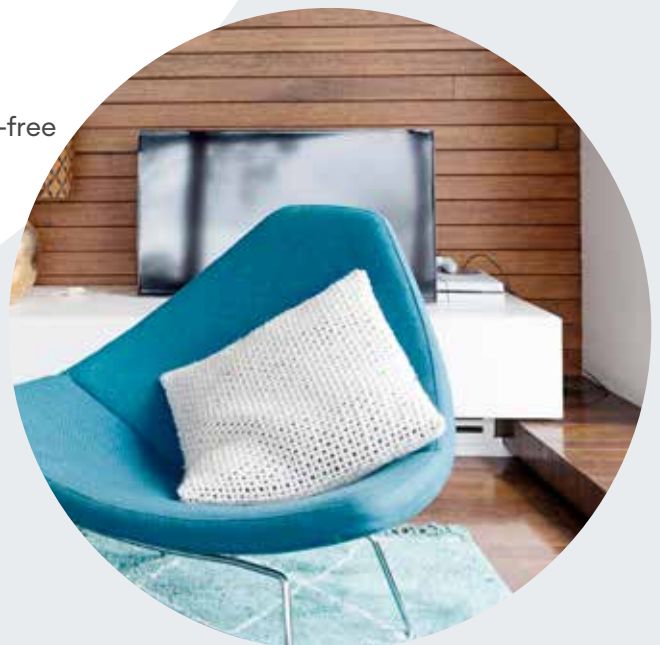
- › High loading capacity
- › Impact- and pressure-resistant
- › Good sound insulation
- › Fire rating B2

Sustainable

- › 100% recyclable in white
- › Basic body of foiled finish made of 100% recycled material
- › Good thermal insulation

Easy-care

- › Easy to clean
- › Maintenance-free



THE ALLROUND TALENT FOR YOUR CREATIVE SOLUTIONS

The perfect solution

Cladding

- › Facade and gable cladding
- › Wall cladding
- › Dormer cladding
- › Roof overhang cladding

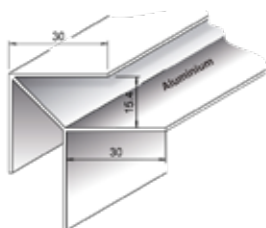
Panelling

- › Garden gate and residential door panelling
- › Yard gate panelling
- › Panelling for railing cladding (e.g. balcony panelling)

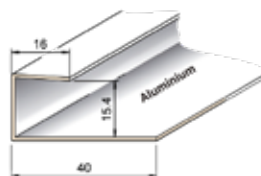
Shutter systems and noise protection



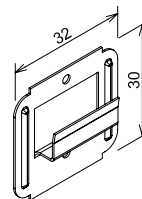
ANCILLARY PROFILES



**External corner
profiles
aluminium**
8234

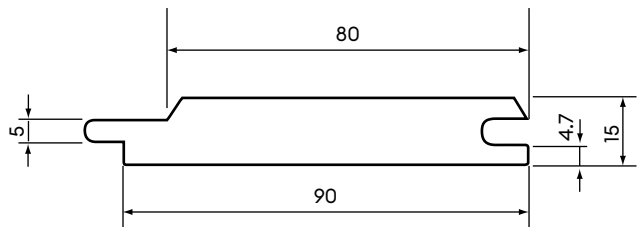


**End profile
aluminium**
8236



**Holding claw
V2A
with stainless
steel pin**
8056

SPECIFICATIONS



	Laminated	White
Profile code	8081	
Dimensions	90 x 15 mm	
Delivery length	6 m	
Weight	1050 g/m ± 10 % (laminated on one or both sides)	770 g/m ± 10 %
Weather resistance	5 years (in some colours 10 years, please enquire)	10 years

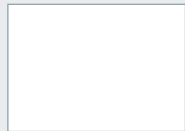
	Test method	Unit	PVC-U solid profiles	
			with lamination	654 White
Mechanical properties				
(Apparent) density	ISO 1183	g/cm ³	0.85 ± 0.05	0.85 ± 0.05
Ball hardness 132 N/30s	DIN EN ISO 2039	N/mm ²	> 20	> 20
Impact strength at +20 °C	DIN EN ISO 179 (Annex)	kJ/m ²	> 24	> 20
Impact strength at 0 °C	DIN EN ISO 179 (Annex)	kJ/m ²	> 22	> 18
Impact strength at -20 °C	DIN EN ISO 179 (Annex)	kJ/m ²	> 20	> 16
Shore D hardness	DIN 53505		≥ 75	> 75
Thermal properties				
Vicat softening temperature	DIN EN ISO 306	°C	> 77	> 77
Heat distortion temperature	DIN EN ISO 75 (HDT)	°C	60	60
Shrinkage at +70 °C (2 h)	DIN 16927 (Annex)	%	< 0.4	< 0.4
Shrinkage at +100 °C (1 h)	DIN 16927 (Annex)	%	< 1.8	< 10
Coefficient of linear expansion (in the range from -30° C to +50° C)	DIN 53752	mm/mK	0.04–0.05	0.08
Insulation value	DIN EN 674 (Annex)	W/(m ² K)	2.2	2.2
Thermal conductivity (0 °C to +60 °C)	DIN EN 52612	W/(mK)	0.095	0.095
Other properties				
Surface hardness			HB-F	
Clemens hardness		gram force	500	
Shot peening test	DIN 53154		A 10000	
Gardner sandblast test	ASTM 968-51	l/MIL	6.0	
Salt spray test	DIN 50021		OK	
Light resistance (tested in accordance with DIN 53389)	DIN 54004		Level 8	
Weather resistance (tested in accordance with DIN 53387, 2000 h)	DIN 54001		Colour fastness grade 4	
Fire behaviour	DIN EN ISO 13501-1 DIN EN ISO 11925-2		E-Class	E-Class

The detailed specifications can be found in our KömaPan manufacturing instructions.

KömaPan®

Colour laminate variants for all tastes

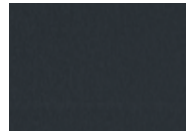
STANDARD COLOURS



Pure white
654 (WS)



Dark oak
15



Anthracite grey
16



Silver grey
21



Mahogany
LJ



Golden oak
LO



Oak rustique
37



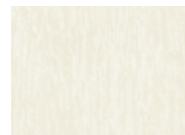
Larch
38



Moss green
53



Fir green
TJ



White
WA



Light oak
73



Mountain oak
74



Striped Douglas fir
76



Alux anthracite
HC



Alux DB 703
AL



Alux grey-aluminium
HA



Alux white-aluminium
HW



Siena PR
SC



Cherry Blossom
CB



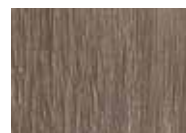
Rustic Cherry
RC



Irish Oak
IO



Santana Oak
OA



Sheffield oak brown
OB



Sheffield oak grey
OS



Sheffield oak light
SO

The profiles are available with lamination on one or both sides. Please refer to our price list for the delivery programme.

SPECIAL COLOURS



Oregon
39



Wine red
44



Cream white
CQ



Navy blue
88



Spruce
AF



Stainless steel
AR

#KömmerlingForTomorrow

profine GmbH
Kömmerling

Zweibrücker Straße 200
66954 Pirmasens
Germany
Tel. +49 (0) 6331 56 0
E-mail: info@koemmerling.com

www.koemmerling.com

